



GAT MONTHLY MEMBERSHIP PROGRESS REPORT

Results as of: 6/30/2022

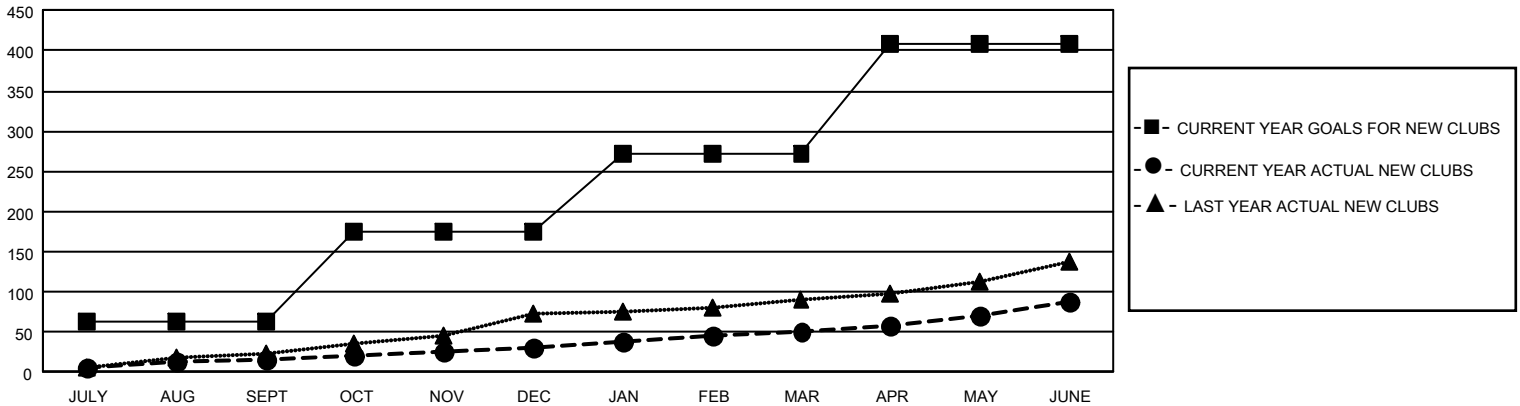
GAT Constitutional Area 1

REPORT DOES NOT INCLUDE CLUBS IN UNDISTRICTED AREAS.

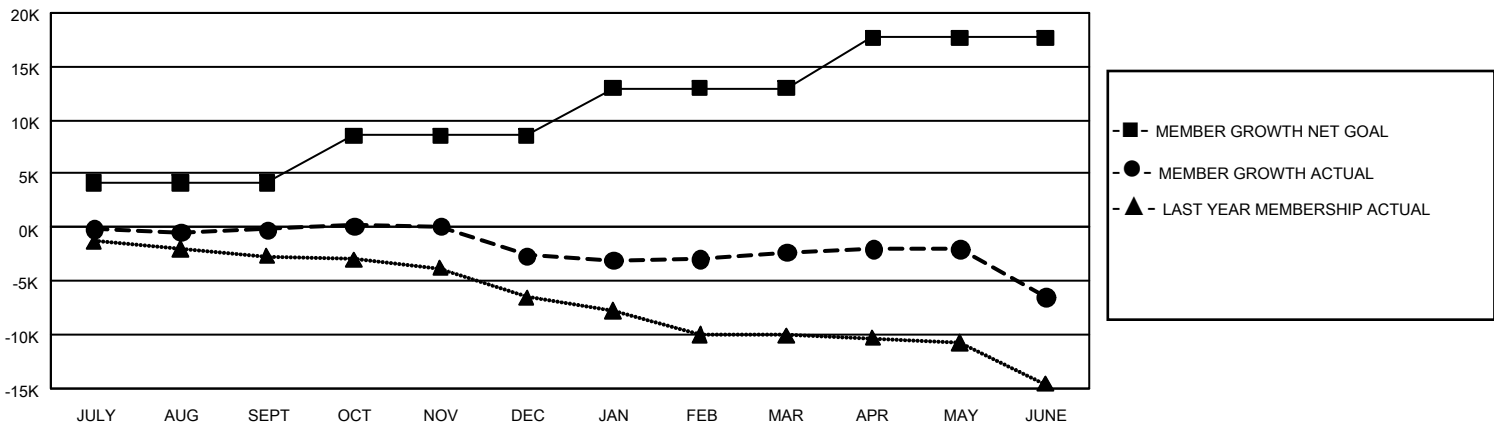
Clubs			
RESULTS FOR 2021-2022			
QUARTER	NEW CLUB GOAL	NEW CLUBS	DROPPED CLUBS
JULY/AUG/SEPT	192	16	127
OCT/NOV/DEC	330	16	114
JAN/FEB/MAR	294	18	55
APR/MAY/JUNE	411	39	143

Members			
RESULTS FOR 2021-2022			
QUARTER	MEMBER GROWTH NET GOAL	MEMBER GROWTH ACTUAL	DROPPED MEMBERS ACTUAL (including transfers)
JULY/AUG/SEPT	4133	8,772	7,719
OCT/NOV/DEC	4409	7,892	9,582
JAN/FEB/MAR	4451	8,201	6,911
APR/MAY/JUNE	4727	10,577	13,833

GOALS AND ACTUAL NEW CLUBS CUMULATIVE



GOALS AND ACTUAL MEMBERS CUMULATIVE



DROPPED CLUBS: 436	6,611 CLUBS OF 10,716 ADDED 1 OR MORE NEW MEMBERS	GENDER DISTRIBUTION	
		MALE 175,475 (64.76%) FEMALE 95,402 (35.21%) NON BINARY 9 (0.00%) PREFER NOT TO ANSWER 76 (0.03%)	
DROPPED MEMBERS		CLICK HERE FOR CUMULATIVE MEMBERSHIP DATA	
DECEASED 5,090 CLUB CANCELLED 3,253 OTHER 29,698 TOTAL 38,041	TOTAL FAMILY UNIT MEMBERS 52,117 FAMILY MEMBERS PAYING HALF DUES 26,804		